



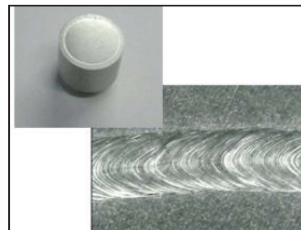
ML-6500C, ML-6700B, ML-6810B Fiber Laser Welder

The new 1 kW fiber laser welder ML-6810B from MIYACHI offers excellent beam quality and maximum power for new and precise welding applications like steel sheet and copper. ML-6810B meets the laser welding needs perfectly in the medical, automotive, battery and electronic industries.

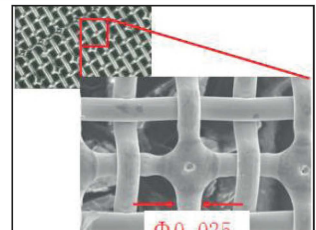
KEY FEATURES

- Small focus with longer focal lengths
- Higher efficiency than lamp pumped systems
- Plug and play systems
- Estimated diode life time > 100.000 hours
- Integrated internal chiller
- Integrated beam splitter (up to three outputs)
- Energy share or time share available for certain models upon request
- Outstanding beam parameter product
- CW / Pulse selectable
- Pulse: 1 to 5000 pps
- Fiber diameter: SI 0.05 – 1 mm
- Environment: 5 to 50° C with humidity 50 to 85%
- IP 54

TYPICAL APPLICATIONS



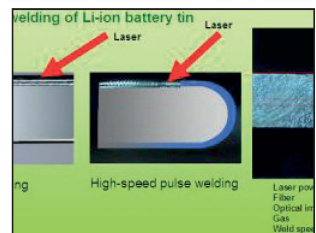
Fine cutting of metals



Brazing



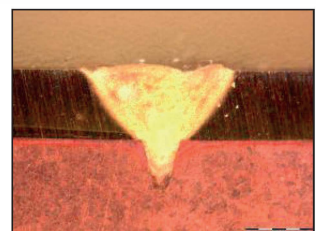
Plastic welding



Cladding



Bellows welding



CuSn6

TECHNICAL SPECIFICATIONS

Model	ML-6500C	ML-6700B	ML-6810B
Max. rated output	300 W	500 W	1000 W or 1200 W
Power requirements	3-phase, 200 V to 400 V AC (+10% / -15%) , 50/60 Hz		
Breaker rated current	20A (380 V / 400 V)	30A (380 V / 400 V)	50A (380 V / 400 V)
Cooling	Water – Water		
Weight	240 kg	250 kg	280 kg
Safety class	Class 4 laser, pilot laser: Class 1		
Certification	CE compliant		

DRAWINGS

⇒ For ML-6500C, four FC-LDs are contained on each side.

Unit: mm

