

# Desktop Series Constant Heat ACF Laminating

The Amada Miyachi Europe Hot Bar Desktop Series uses the proven SH500 pneumatic bonding head technology and offers reliable process control.

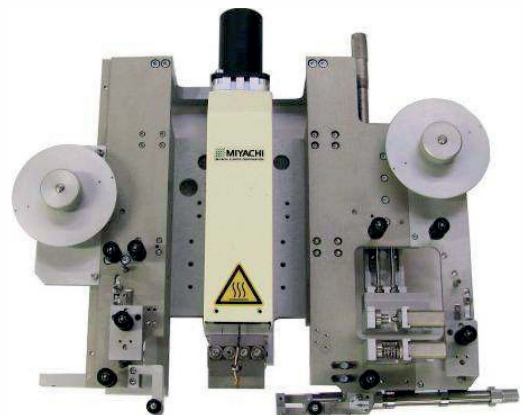
All modules are mounted on a sturdy and easily adjustable frame. The Desktop Series includes different product handling features like left-right and front-rear slides as well as rotary tables. All systems offer maximum output and are designed according to modern ergonomic standards. Optional components for the Desktop Series are Sarcon and Kapton Interposer Modules as well as product tooling.

## KEY FEATURES

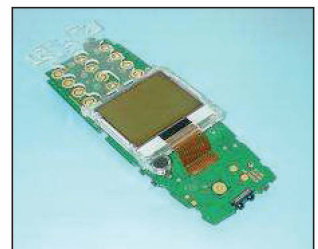
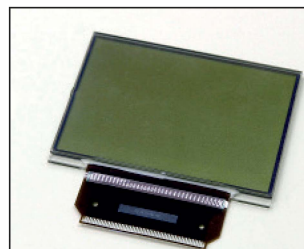
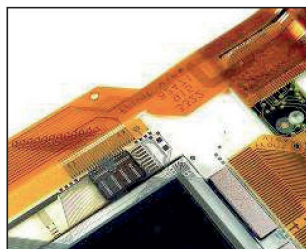
- Compact and flexible systems for high quality connections
- Easily adjustable frame construction
- Ideally suited for ACF Laminating (Pre-bonding)
- Reliable process control thanks to proven technology
- Optional Pulsed Heat Temperature Control (Retrofittable)
- Optional Light-Screen Safety protection cover (Retrofittable)

## CONFIGURATION OPTIONS

- 3-layer ACF tape configuration upgrade
- Desktop upgrade to Pulsed Heat Temperature Control
- Manual/Automatic Sarcon Interposer module
- Combined ACF Laminating/Final bonding using dual bond force and pulsed heat



## TYPICAL APPLICATIONS



## TECHNICAL SPECIFICATIONS

|  |  |
|--|--|
| Force range  | SH 500: 50 – 500 N @ 6 Bar **                        |
| Hot Bar stroke   | 50.0 mm [2.0 inch ]                                  |
| Temperature range  | Laminating 50 – 150 °C (Constant heat configuration) |
| Time period  | Reflow: 0.1 to 99.9 seconds (0.1 second increments)  |
| Power requirements   | 100 to 240 Vac, 50/60 HZ, 16 Amp max                 |
| Air supply   | 4 – 8 bar [ 60 – 120 psi ] , dry & filtered air      |
| Maximum fixture height   | 50 mm [1.97 Inch ]                                   |
| Gantry open width  | 520 mm [ 20.47 Inch ]                                |
| Fixture assembly base plate  | 160 x 160 mm [ 6.30 x 6.30 Inch ]                    |
| Starting operation   | Two hand control                                     |
| Operating temperature  | 15 – 40 °C   |
| Operating humidity   | 93% @ 40 °C  |
| ** For additional specifications, please review the Bonding Head Datasheet |  |

## ACF LAMINATING MODULE TECHNICAL SPECIFICATIONS

|                                     |   |
|-------------------------------------|---|
| ACF Module (Standard configuration) | Standard 2-Layer tape configuration<br>Standard ACF Laminating (LxW) 50 mm x 2,0 mm<br>Minimum ACF Laminating (LxW) 5 mm x 1,0 mm<br>(Optional) ACF Laminating (LxW) 100 mm x 2,0 mm<br>Placement accuracy: X-direction +/- 0,5 mm / Y-direction +/- 0,3 mm |
| ACF Module (Optional upgrade)       | Upgrade to 3-Layer ACF tape configuration   |
| Peeler mechanism                    | Pneumatic   |
| ACF tape cutting                    | Half-cut  |
| Tape Feeding and Tension Control    | DC-Motor & sensor controlled  |

## ACF LAMINATING DESKTOP MODEL SPECIFICATIONS

|   |   |
|---|---|
| Desktop DT-150-ACF-CH   | No movement   |
| Desktop DT-250-ACF-CH<br>(manual 2-position front-rear slide) | Stroke between front and bonding position: 200 mm fixed<br>Desktop DT -260-ACF-CH |
| (manual 3-position front-rear slide)                          | Stroke between first and second bonding position: 0-50 mm                         |
| Desktop DT-350-ACF-CH (automatic 2-position front-rear slide) | Stroke between front and bonding position: 200 mm fixed                           |
| Desktop DT-360-ACF-CH (automatic 3-position front-rear slide) | Stroke between first and second bonding position: 0-50 mm                         |
| Desktop DT-440-ACF-CH (manual 2-position turntable)           | Turntable diameter: 380 mm  |
| Desktop DT-450-ACF-CH (automatic 2-position turntable)        | Turntable diameter: 380 mm / turntable movement time: < 2 seconds                 |

## WEIGHT & DIMENSIONS

|                       |   |
|-----------------------|---|
| Dimensions HxWxD (mm) | 510 x 550 x 600   |
| Weight (in kg)        | 40 kg (excluding Uniflow Power Supply for optional Pulsed Heat configuration) |