



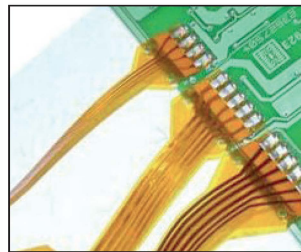
Desktop Series Pulsed Heat Hot Bar Systems

The Amada Miyachi Europe Desktop Series PH is an integral part of the Hot Bar Systems using Pulsed Heat Technology (Uniflow Power Supply), the SH80 or the SH500 pneumatic Bonding Head and the standard Quick Connect Blocks with Thermo-plane Thermodes. All modules are mounted on a sturdy and easily adjustable frame construction. The Desktop Series includes different product handling features like left-right and front-rear slides as well as rotary tables. All systems offer maximum output and are designed considering ergonomic standards. Optional components for the Desktop Series are optical alignment modules, sarcon & kapton interposer modules and customised product tooling.

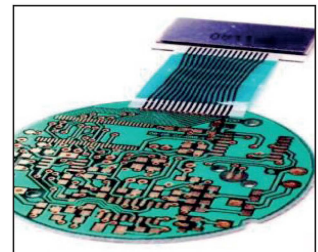
KEY FEATURES

- Small and flexible systems for high quality connections
- Ideal price-performance (throughput) ratio
- Simple adjustable frame construction
- For Heat-Seal bonding, Hot Bar Reflow Soldering and Heat Staking
- Reliable process control, by proven technology of Uniflow Power Supply

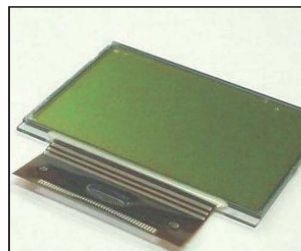
TYPICAL APPLICATIONS



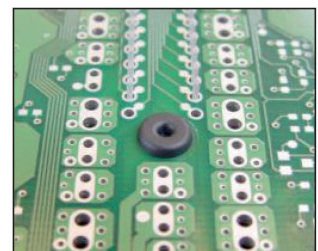
Hot Bar reflow soldering



Heat-seal bonding



ACF bonding



Heat staking

TECHNICAL SPECIFICATIONS

| | | | |
|---|--|---------------------|---------------------|
| Power requirements | 100 to 240 Vac, 50/60 HZ, 16 Amp max | | |
| Air supply | 4 – 8 bar [60 – 120 psi] , dry & filtered air | | |
| Maximum fixture height | 50 mm [1.97 Inch] | | |
| Gantry open width | 520 mm [20.47 Inch] | | |
| Fixture assembly baseplate | 160 x 160 mm [6.30 x 6.30 Inch] | | |
| Starting operation | Two hand control | | |
| Operating temperature | 15 – 40 °C | | |
| Operating humidity | 93% @ 40 °C | | |
| Bonding head & uniflow technical specifications | | | |
| Force range | SH 500: 50 – 500 N @ 6 Bar SH 80 : 8 – 80 N @ 6 bar | | |
| Hot Bar stroke | SH 500: 50.0 mm SH 80 : 50.0 mm | | |
| Temperature range | | | |
| Idle | 25 to 100 °C | Heat | 60 to 600 °C |
| Base Heat | 25 to 300 °C | Heat Extended Range | 60 to 999 °C |
| Preheat | 60 to 300 °C | Postheat | 25 to 600 °C |
| Time period (in 0.1 sec increments) | | | |
| Base Heat | 0 to 99.9 seconds | Rise to Heat Time | 0 to 9.9 seconds |
| Rise to Preheat Time | 0 to 9.9 seconds | Heat | 0.1 to 99.9 seconds |
| Preheat | 0 to 99.9 seconds or continuous | Postheat | 0 to 99.9 seconds |
| Communication ports | | RS-232, RS-485 | |
| For additional specifications, please review the Uniflow-4 Datasheet and the Bonding Head Datasheet | | | |

PRODUCT SPECIFICATIONS

| | |
|---|---|
| Desktop DT-150-PH | No movement |
| Desktop DT-250-PH (manual 2-position front-rear slide) | Stroke between front and bonding position: 200 mm fixed |
| Desktop DT -260-PH (manual 3-position front-rear slide) | Stroke between first and second bonding position: 0-50 mm |
| Desktop DT-270-PH manual 2-position left-right slide) | Stroke between left and right bonding position: 180 mm fixed |
| Desktop DT-350-PH automatic 2-position front-rear slide) | Stroke between front and bonding position: 200 mm fixed |
| Desktop DT-360-PH (automatic 3-position front-rear slide) | Stroke between first and second bonding position: 0-50 mm |
| Desktop DT-370-PH (automatic 2-position left-right slide) | Stroke between left and right bonding position: 180 mm fixed |
| Desktop DT-440-PH (manual 2-position turntable) | Turntable diameter: 380 mm |
| Desktop DT-450-PH (automatic 2-position turntable) | Turntable diameter: 380 mm / turntable movement time: < 2 seconds |

WEIGHT & DIMENSIONS

| | |
|-----------------------|--|
| Dimensions HxWxD (mm) | 510 x 550 x 600 |
| Weight (in kg) | 40 kg (excluding Uniflow Power Supply) |