



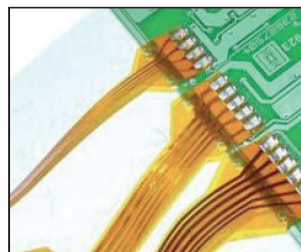
# Desktop Series Pulsed Heat Hot Bar Systems

The Amada Miyachi Europe Desktop Series PH is an integral part of the Hot Bar Systems using Pulsed Heat Technology (Uniflow Power Supply), the SH80 or the SH500 pneumatic Bonding Head and the standard Quick Connect Blocks with Thermo-plane Thermodes. All modules are mounted on a sturdy and easily adjustable frame construction. The Desktop Series includes different product handling features like left-right and front-rear slides as well as rotary tables. All systems offer maximum output and are designed considering ergonomic standards. Optional components for the Desktop Series are optical alignment modules, sarcon & kapton interposer modules and customised product tooling.

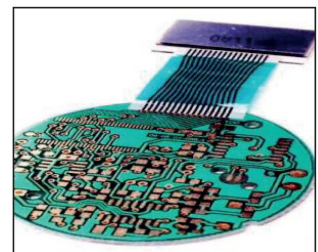
## KEY FEATURES

- Small and flexible systems for high quality connections
- Ideal price-performance (throughput) ratio
- Simple adjustable frame construction
- For Heat-Seal bonding, Hot Bar Reflow Soldering and Heat Staking
- Reliable process control, by proven technology of Uniflow Power Supply

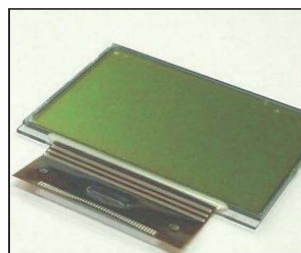
## TYPICAL APPLICATIONS



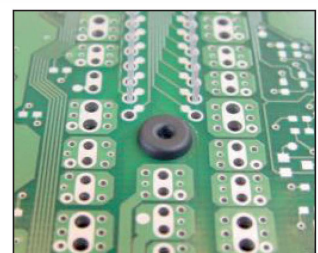
*Hot Bar reflow soldering*



*Heat-seal bonding*



*ACF bonding*



*Heat staking*

## TECHNICAL SPECIFICATIONS

Power requirements	100 to 240 Vac, 50/60 HZ, 16 Amp max		
Air supply	4 – 8 bar [ 60 – 120 psi ] , dry & filtered air		
Maximum fixture height	50 mm [1.97 Inch ]		
Gantry open width	520 mm [ 20.47 Inch ]		
Fixture assembly baseplate	160 x 160 mm [ 6.30 x 6.30 Inch ]		
Starting operation	Two hand control		
Operating temperature	15 – 40 °C		
Operating humidity	93% @ 40 °C		
<b>Bonding head &amp; uniflow technical specifications</b>			
Force range	SH 500: 50 – 500 N @ 6 Bar SH 80 : 8 – 80 N @ 6 bar		
Hot Bar stroke	SH 500: 50.0 mm SH 80 : 50.0 mm		
Temperature range			
Idle	25 to 100 °C	Heat	60 to 600 °C
Base Heat	25 to 300 °C	Heat Extended Range	60 to 999 °C
Preheat	60 to 300 °C	Postheat	25 to 600 °C
Time period (in 0.1 sec increments)			
Base Heat	0 to 99.9 seconds	Rise to Heat Time	0 to 9.9 seconds
Rise to Preheat Time	0 to 9.9 seconds	Heat	0.1 to 99.9 seconds
Preheat	0 to 99.9 seconds or continuous	Postheat	0 to 99.9 seconds
Communication ports		RS-232, RS-485	
For additional specifications, please review the Uniflow-4 Datasheet and the Bonding Head Datasheet			

## PRODUCT SPECIFICATIONS

Desktop DT-150-PH	No movement
Desktop DT-250-PH (manual 2-position front-rear slide)	Stroke between front and bonding position: 200 mm fixed
Desktop DT -260-PH (manual 3-position front-rear slide)	Stroke between first and second bonding position: 0-50 mm
Desktop DT-270-PH manual 2-position left-right slide)	Stroke between left and right bonding position: 180 mm fixed
Desktop DT-350-PH automatic 2-position front-rear slide)	Stroke between front and bonding position: 200 mm fixed
Desktop DT-360-PH (automatic 3-position front-rear slide)	Stroke between first and second bonding position: 0-50 mm
Desktop DT-370-PH (automatic 2-position left-right slide)	Stroke between left and right bonding position: 180 mm fixed
Desktop DT-440-PH (manual 2-position turntable)	Turntable diameter: 380 mm
Desktop DT-450-PH (automatic 2-position turntable)	Turntable diameter: 380 mm / turntable movement time: < 2 seconds

## WEIGHT & DIMENSIONS

Dimensions HxWxD (mm)	510 x 550 x 600
Weight (in kg)	40 kg (excluding Uniflow Power Supply)