



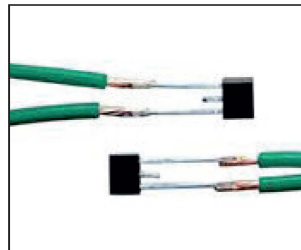
MFP60 for AWS3 Motorised Weld Head

- Compact design for optimal system integration
- Servo motor driven for very short weld times
- Direct drive system for fast response
- Programmable electrode speed, force and position
- Robust design gives very low force oscillations
- Full AWS3 functionality for high end process control

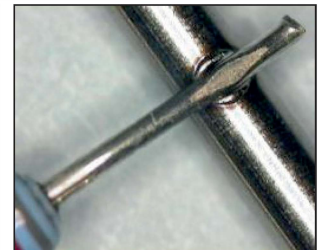
CONFIGURATION OPTIONS

The MFP60 is used with the AWS3 Active Welding System. The AWS3 integrates the process control of all mechanical and electrical parameters, static and dynamic process monitoring, quality analysis with advanced SPC feature and datalogging. More information can be found in the Technical Data Sheet of AWS3 Active Welding System.

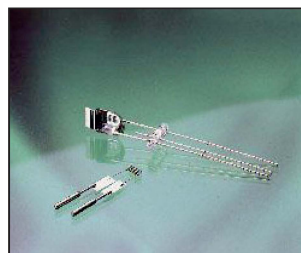
TYPICAL APPLICATIONS



Electric/Electronic components



Tooling



Lighting



Automotive

TECHNICAL SPECIFICATIONS

Force range:	20 to 60 N
Force Resolution:	1 N
Maximum electrode stroke:	30 mm
Position accuracy:	1 μ
Displacement measurement accuracy:	0,25 μ
Maximum electrode velocity:	200 mm/sec
Operating temperature range	0-40 degrees
Electrode dimension:	3 mm, 6 mm
Mounting possibilities:	Stand or automation
Water cooling:	optional
Control System:	AWS3
Programmable:	Home, up & search position, up speed, down and search speed
Power requirements	230 VAC, 110 VAC optional

WEIGHT & DIMENSIONS

Dimensions (WxDxH)	actuator head only: 40 x 72 x 298 (mm)
Weight (in kg)	actuator head only: 3,5 kg

DRAWINGS

