



ML-9001A

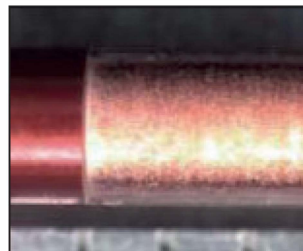
Laser Marker

- Plug and play systems for quick set up
- Compact design minimises space requirement
- Ability to mark metals, plastics and composite materials
- Air cooled eliminates the expense of a water chiller and reduces running costs
- Tailored operation in either PC, Touch screen or stand alone versions
- User friendly windows based software

KEY FEATURES

- Wavelength 532 nm
- Q-sw frequency up to 200 kHz
- Characters TueType, DIN, JIS Z8905, JIS Z8904, JIS Z 8903, OCR-A, OCR-B
- Graphics DXF, BMP, JPEG, GIF, TIFF
- Serial data, variable data, calender marking
- DATA matrix code ECC200, QR code
- Full range of expanders and lenses
 - Expanders x3, x4, x6, x8
 - Lenses f80, f100, f160, f254, f300, f410

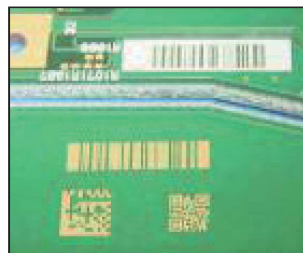
TYPICAL APPLICATIONS



Copper wire



Solar and semiconductor



PCB

TECHNICAL SPECIFICATIONS

Max. rated output	5 W
Power requirements	Single-phase, 100 V - 240 VAC (+6%/-10%) , 50/60 Hz
Breaker rated current	10A
Cooler	Air cooling
Environment	5 to 35°C with humidity 40 – 85%
Weight	37 kg
Safety Class	Class 4 laser, pilot laser: Class 1
Legal Approval	CE compliant

Lens	f80	f100	f160	f254	f300	f410
Area	□ 56 mm	□ 80 mm	□ 100 mm	□ 150 mm	□ 175 mm	□ 225 mm
W.D.	76 mm	95 mm	175 mm	277 mm	327 mm	434m

DRAWINGS

